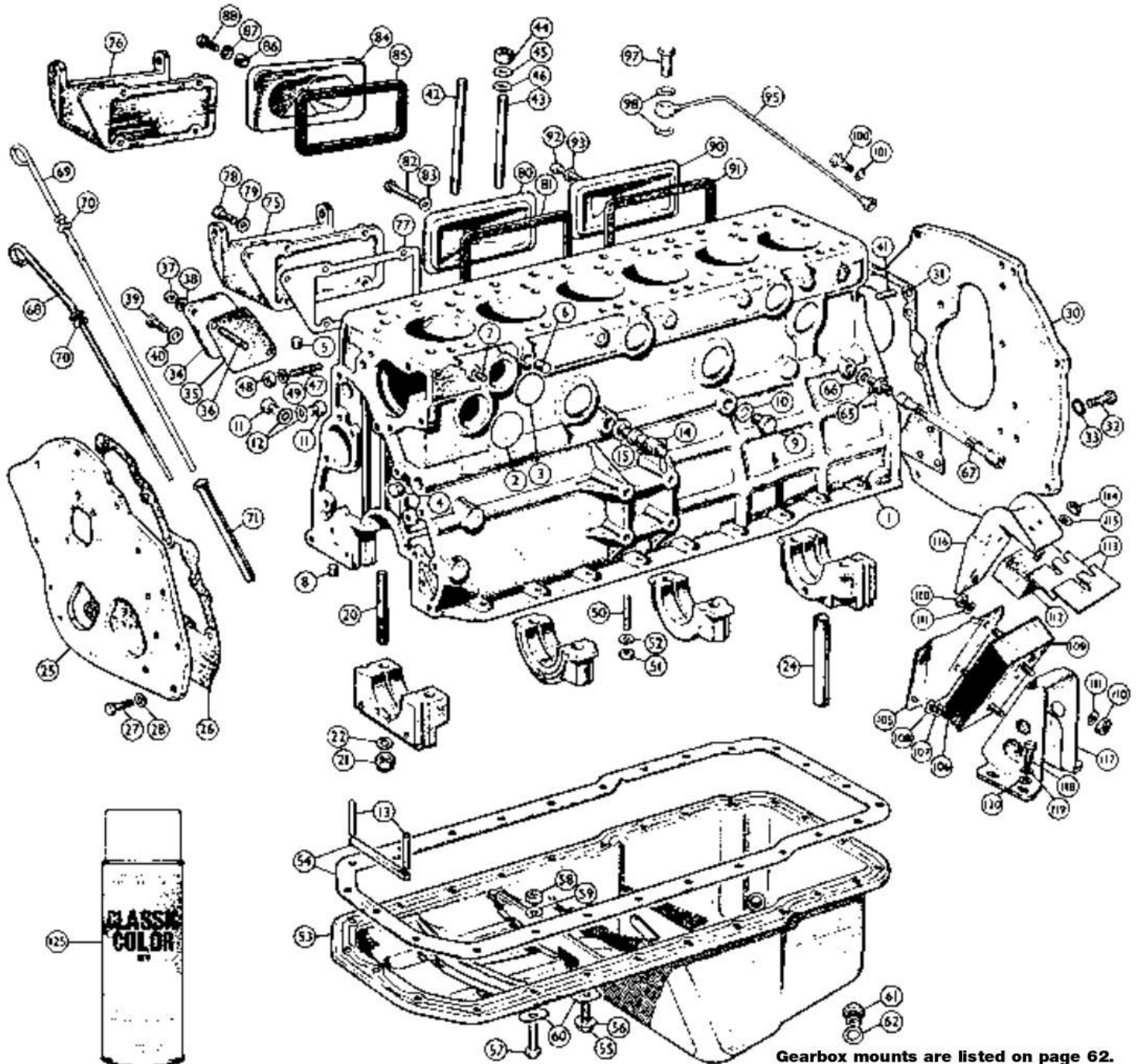


# External Engine 100-6, 3000



Gearbox mounts are listed on page 62.

No.	Part No.	Price (each)	Description	Application	Qty. Req.
1			CYLINDER BLOCK		1
2	328-230		CORE PLUG, steel, dished, 1-5/8"	BN4, BN6	5
	328-231		CORE PLUG, brass, dished, 1-5/8"	BN4, BN6	5
	328-235		CORE PLUG, steel, cup, 1-41/64"	BN7, BT7, BJ7, BJ8	5
	328-236		CORE PLUG, brass, cup, 1-41/64"		5
3	328-260		CORE PLUG, dished, 1-5/16"	BN4, BN6	4
	328-265		CORE PLUG, cupped, 1-5/16"	BN7, BT7, BJ7, BJ8	2
4			PLUG, oil gallery		2
5			TAPERED PLUG, for oil hole		1
6			TAPERED PLUG, for water gallery, large		5
7			TAPERED PLUG, for water gallery, small		2
8			TAPERED PLUG, for tensioner feeder		1
9	328-045		PLUG, for oil filter feeder hole		1
10	324-549		WASHER, for plug		1
11	328-081		PLUG, for oil pump feed hole		2
12	324-546		WASHER, for plug		2
13			PLUG, felt, for front and rear main bearing caps		4
14	470-240		DRAIN TAP		1
15	324-671		WASHER, for drain tap		A/R
20	728-065		STUD, main bearing cap		8
	322-898		STUD KIT, high strength (incl. nuts & washers), ARP brand		1
21	311-000		NUT		8
22	322-835		WASHER, locking	BN4 to C.E.57236	8
24			DRAIN PIPE, rear bearing cap	BN4 to C.E.57181	1

No.	Part No.	Price (each)	Description	Application	Qty. Req.
			NA DRAIN PIPE, rear bearing cap	{ BN4 from C.E.57182, BN6, BN7, BT7, BJ7, BJ8	1
25			NA ENGINE MOUNTING PLATE, front	{ BN4, BN6, BN7 & BT7 to (e)29D-H26212	1
			NA ENGINE MOUNTING PLATE, front	{ BN7 & BT7 from (e)29E-H101, BJ7, BJ8	1
26			GASKET, front mounting plate		1
27	322-040		BOLT, plate to crankcase		6
28	365-730		WASHER, locking		6
30			ENGINE MOUNTING PLATE, rear		1
31	365-732		GASKET, rear mounting plate		1
32			BOLT		11
33	324-045		WASHER, shakeproof		11
34			BLANKING PLATE	BN4, BN6	1
35			GASKET		1
36			STUD		2
37	310-140		NUT		2
38	365-730		WASHER, locking		2



# External Engine 100-6, 3000

No.	Part No.	Price (each)	Description	Application	Qty. Req.
39			BOLT	} BN7, BT7, BJ7, BJ8	2
40			WASHER, copper		4
41	325-080		DOWEL, backplate to block		2
42	328-865*		STUD, cylinder head, long *	} 2 port head	8
43	328-875*		STUD, cylinder head, short *		8
	328-875*		STUD, cylinder head, short *	6 port head	16
* Studs should be installed only finger tight in the engine block to avoid possible cracking into the water jacket.					
44	310-940		NUT, cylinder head stud		16
45	324-475		WASHER, plain		16
46	724-060		WASHER, bronze	2 port head, long studs	8
47	328-885		STUD, water pump to block		4
48	310-140		NUT		4
49	365-730		WASHER, locking		4
50	328-670		STUD, mounting oil pump to crankcase		3
51	310-140		NUT		3
52	365-730		WASHER, locking		3
53	021-143		SUMP, steel		1
	021-148		SUMP, alloy	(see below)	1
54	525-003		GASKET SET, sump		1
55	322-170		BOLT, sump to crankcase	BN4, BN6	25
	322-170		BOLT, sump to crankcase	} BN7, BT7, BJ7, BJ8	23
56	462-385		WASHER, shakeproof		23
57	322-247		BOLT, sump and manifold drain pipe clip to crankcase		2
			NUT		2
58	310-760		WASHER, locking		2
60	324-765		WASHER, oval		25
61	328-460		PLUG, oil drain		1
	328-461		PLUG, oil drain, magnetic	option	1
62	324-800		WASHER, copper		1
65	376-800		UNION, for oil pressure pipe		1
66	324-555		WASHER, for union		1
67	021-711		OIL LINE, flexible		1
68	021-914		DIPSTICK	BN4 thru BJ8 to (e)29K-H278	1
69	031-219		DIPSTICK	BJ8 from (e)29K-H279	1
70	031-220		WASHER, rubber		1
71	021-913		TUBE, dipstick		1
75	835-245		SIDE COVER, front	BN4, BN6, BN7, BT7, BJ7	1
76	835-280		SIDE COVER, front	BJ8	1
77	697-390		GASKET		1
78	322-040		BOLT		5
79	328-335		WASHER, plain		5
80	460-050		SIDE COVER, center, stock type	} BN4, BN6, BN7, BT7, BJ7	1
	460-051		SIDE COVER, center, alloy repl.		1
81	296-370		GASKET, cork, center		1
82	322-310		BOLT	BJ8 to (e)29F-3953	1
83	724-055		WASHER, plain		1
84	460-050		SIDE COVER, center	} BJ8 from (e)29F-3954	1
85	296-375		GASKET, rubber, center		1
86	324-335		WASHER, sealing		1
87	324-345		WASHER, cup		1
88	320-695		BOLT	Can be used on all for improved sealing if used as a set	1
90			SIDE COVER, rear	} all	1
91	296-370		GASKET, cork, rear		1
92	322-310		BOLT		1
93	724-055		WASHER, plain		1
95	021-260		OIL FEED PIPE, tachometer drive	} BN4, BN6, BN7, BT7, BJ7	1
97	021-933		BOLT, for union		1
98	324-595		WASHER		2
100	021-934		BOLT, for union		1
101	324-605		WASHER		2
105	NA		FRONT SUPPORT BRACKET	BN4, BN6	2
	NA		FRONT SUPPORT BRACKET, L/H	} BN7, BT7, BJ7, BJ8	1
	NA		FRONT SUPPORT BRACKET, R/H		1

No.	Part No.	Price (each)	Description	Application	Qty. Req.
106	322-590		BOLT, bracket to crankcase		8
107	324-040		WASHER, locking		8
108	324-860		WASHER, plain		8
109	021-341		ENGINE MOUNT		2
110	310-800		NUT		8
111	324-050		WASHER, locking		8
112	021-342		RUBBER BUFFER, engine mounting		2
113			PACKING PIECE, .048"		A/R
			PACKING PIECE, .036"		A/R
114	310-140		NUT		2
115	365-730		WASHER, locking		2
116			BRACKET, engine mounting buffer		2
117	021-423		FRONT MOUNTING BRACKET		2
118	322-050		BOLT, bracket to sidemember		8
119	324-040		WASHER, locking		8
120	324-860		WASHER, plain		8
125	220-550		ENGINE PAINT, metallic green	} 12 oz. aerosol	A/R
	220-580*		ENGINE PAINT, BMC green*		A/R

\*Note: Used only on Abingdon built BN4s with 2-port heads.

## Gasket:

	524-050		HEAD GASKET SET	BN4 (2 port)	1
	524-051		HEAD GASKET SET	{ BN4 (6 port)BN6, BN7, BJ7, BJ8	1
(head gasket sets include gaskets for cylinder head, valve cover, manifolds, exhaust flanges, carb. mounting, and valve stem seals.)					
	522-025	\$26.99	CONVERSION GASKET SET		1
(includes all items listed below)					
13			PLUG, for front and rear main bearing caps		4
15	324-671		WASHER, drain tap		1
26			GASKET, front mounting plate		1
31			GASKET, rear mounting plate		1
54	525-003		GASKET SET, sump		1
			SEAL, ft. & rear main brg. caps		2
62	324-800		WASHER, copper, sump drain plug		1
77	697-390		GASKET, front side cover		1
81	296-370		GASKET, center and rear side covers		2
	021-115		GASKET, oil filter adaptor plate		2
			GASKET, oil pump to block		1
			GASKET, oil pump outlet		1
	460-580		GASKET, tensioner		1
	296-300		GASKET, thermostat		1
	697-380		GASKET, timing cover		1
	292-101		GASKET, water outlet elbow		1
	697-370		GASKET, water pump		1

## Steel Core Plug Sets (complete engine)

328-208	CORE PLUG SET	BN4, BN6 2-port head	1
328-218	CORE PLUG SET	BN4, BN6 6-port head	1
328-228	CORE PLUG SET	BN7, BT7, BJ7, BJ8	1

## High Strength Head Stud Set

Properly heat treated studs with rolled threads are rated at 200,000 psi tensile strength for unparalleled strength and reliability. Includes high strength nuts, washers and instructions.

For BN4 through BJ8 6-port heads. If using an alloy cylinder head, you must use the oversize washers 328-877!

**Stud Set 328-876**  
**O/S Washers 328-877**

## Alloy Oil Pan

These finned, cast aluminum oil pans are exact replicas of the competition pans fitted to "Works Prepared" 6-cylinder Austin-Healeys. They improve oil cooling and help stiffen the bottom end of the cylinder block on highly

stressed competition engines. Their thick, smoothly machined flange avoids the problem of oil leaks caused by bent flanges on stock pressed steel pans. As stock oil pan bolts are too short for use with this oil pan, replacement bolts, washers, and drain plug are included.

**021-148**

